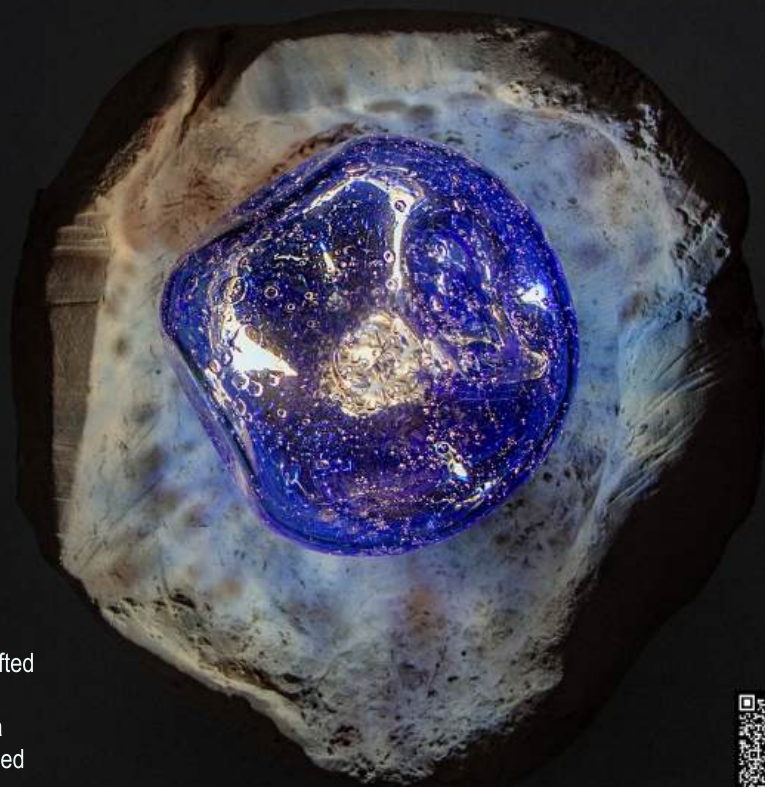


ASEA

series

by Ceren Gürkan



Asea is a wall piece inspired by the sea, featuring handcrafted wavy textures that reflect how sunlight meets the shore.

Meaning 'seawards', Asea captures the essence of the sea through its fluid, organic forms. Each piece is unique, shaped by Ceren Gürkan using stones from places she's visited, bringing a deep personal connection to nature.

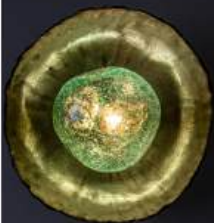
Asea transforms spaces with its serene play of light, offering a blend of natural elegance and sophisticated design.

Custom sizes and colors available.



info@maiizen.com
+(90) 532 3089393

www.maiizen.com



asea12dark



asea14dark



asea8dark



asea12sand



asea2sand



asea13sand

AQUA

series

by Ceren Gürkan



Inspired by the fluid beauty of the ocean, Aqua pendant lamps are crafted using traditional hand-blown glass techniques, mimicking the spiral patterns of seashells. Each lamp reflects the organic motion of water, bringing a touch of nature's magic into any space. Whether illuminating a dining table or casting a soft glow over a bar, these pendant lamps offer function and artistry, evoking a sense of serenity and connection to the natural world. Aqua is more than lighting—it's an experience of tranquility and art.

Custom sizes and colors available.



info@maiizen.com
+(90) 532 3089393

www.maiizen.com



aqua10pwhite



aqua20phon



aqua17phon



aqua10pclear



aqua15phon

SOUL

series

by Ceren Gürkan



The Soul Collection captures the essence of individuality through its organic shapes and vibrant colors. Each piece is created by fusing molten glass, resulting in unique, flowing forms that echo the diversity of human character.

This meticulous craftsmanship brings visual beauty and a sense of personal connection, allowing light to flow like energy through the soul. Soul's artistic presence illuminates spaces with distinct emotional depth.

Custom sizes and colors available.



info@maiizen.com

+ (90) 532 3089393

www.maiizen.com



soul20tgreen



soul20tblue